

## COLLECTION INFO

### AVAILABILITY:

in-stock, typically ships within 24-48 hours

### AVAILABLE FINISHES:

- EB** = ebony (wood stain)
- HV** = havanna (wood stain)
- NA** = natural (wood stain)
- PB** = polished brass (beaded)
- PC** = polished chrome (beaded)
- CB** = chrome/brass (beaded)

### MATERIALS:

- wood, pottery, brass beads

### DIAMETER & BRACKETS:

1½"D: bracket required every 4-5 feet

### STYLE:

Traditional

### SHIPPING & ADDITIONAL NOTES:

The collection's pole splice can be used to achieve longer spans - the required center bracket will help conceal the resulting seam.

### ABBREVIATION KEY:

- D** = diameter
- H** = height
- L** = length
- P** = projection
- W** = width
- ID** = inside diameter
- OD** = outside diameter

### SAMPLE SET-UPS:



# Terra Cotta

Vesta's Terra Cotta collection intricately weaves warm earth tones throughout the composition of this ethnically inspired grouping of finials and hardware. The collection features mixed media designs utilizing wood, handmade pottery and beaded metals - all capable of working in unison to help you produce a truly unique window treatment.

### COMPONENT SPOTLIGHT

Featured below is this collection's pole splice. To install, just find the center of the two poles you plan to join and screw them together until tight. The required center bracket for a longer span will help conceal the resulting seam produced by joining two poles.

part: #909200



# Terra Cotta collection

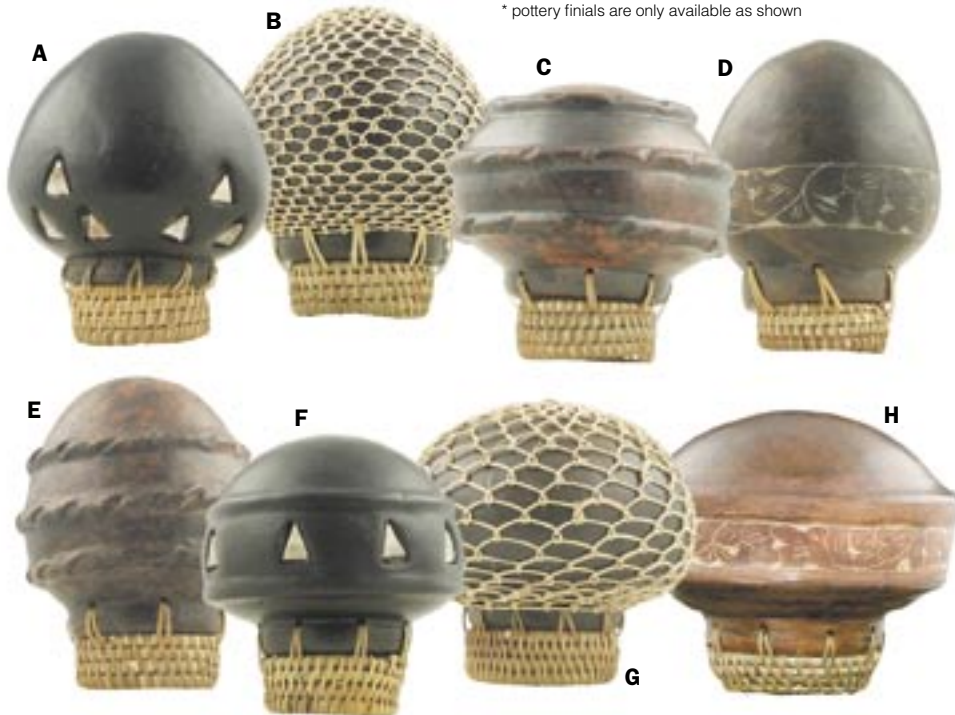
1 1/8" diameter  
bracket required every 4' - 5'

Vesta Inc / 800.638.3782 - voice / 864.225.0228 - fax / www.ivesta.com

61

**Availability:** in-stock, typically ships within 24-48 hours | **Available Finishes:** EB, HV, NA, PB, PC, CB | **Materials:** wood, pottery, brass beads

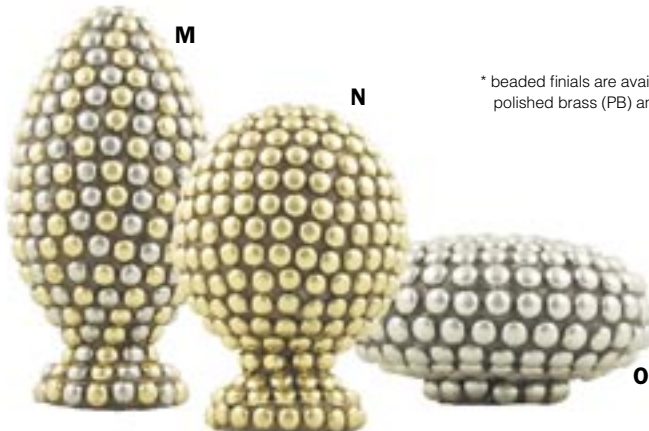
## FINIALS



\* due to the nature of pottery, dimensions/details may vary slightly



\* beaded finials are available in chrome/brass (CB), polished brass (PB) and polished chrome (PC) finishes

**A. Apache**

#291112 - 2 5/8"W, 3 1/4"L  
\*only available as shown

**B. Gila**

#291132 - 2 5/8"W, 3 1/4"L  
\*only available as shown

**C. Yuma**

#291552 - 3"W, 3"L  
\*only available as shown

**D. Hopi**

#291142 - 2 5/8"W, 3 1/4"L  
\*only available as shown

**E. Mohawk**

#291152 - 2 5/8"W, 3 1/4"L  
\*only available as shown

**F. Navajo**

#291512 - 2 3/4"W, 3"L  
\*only available as shown

**G. Oglala**

#291532 - 3"W, 3"L  
\*only available as shown

**H. Pueblo**

#291542 - 3"W, 2 5/8"L  
\*only available as shown

**I. Seminole**

#291083 - 2"W, 4"L  
\*pictured in NA

**J. Sioux**

#291093 - 2 1/8"W, 3"L  
\*pictured in HV

**K. Cherokee**

#291013 - 1 5/8"W, 2 1/2"L  
\*pictured in EB

**L. Cheyenne**

#291053 - 1 7/8"W, 1 5/8"L  
\*pictured in NA

**M. Kiowa**

#291012 - 2 1/8"W, 4"L  
\*pictured in CB

**N. Mayo**

#291011 - 2 1/4"W, 3 1/4"L  
\*pictured in PB

**O. Yaqui**

#291008 - 2 5/8"W, 1 1/2"L  
\*pictured in PC

## BRACKETS

**Shoshone**

#292431 - 2 1/4"W, 5 3/4"P  
\*stem may be cut

**Comanche**

#292531 - 2 1/4"W, 5 3/4"P  
\*stem may be cut

**Aztec**

#292430 - 2 1/8"H, 3 3/8"P

**Zuni**

#292530 - 2 1/8"W, 2"P

**Inside Mount**

#292000  
1 7/8"W, 1 1/8"L

## ACCESSORIES



**Mohican Tieback**  
#920703 - 1 3/4"W, 3"P

**Wand**

#900030 - 39"L

**Wood Poles**

#297180 - 1 1/8"D, 71"L  
#297200 - 1 1/8"D, 78"L  
#297250 - 1 1/8"D, 98"L

**Pole Splice**

#909200 - 2"L

**Ring wood**

#296010  
1 3/8"ID, 2 1/8"OD

**Ring rattan**

#296020  
1 5/8"ID, 2"OD

**Ring Clip**

#909101

Dimensions shown beneath the hardware describe the physical characteristics of that item - IT DOES NOT REFER TO THE POLE DIAMETER IT'S COMPATIBLE WITH.