

+ COLLECTION INFO

AVAILABILITY:

special order 3-4 weeks, no returns

AVAILABLE FINISHES:

- AG-B** = antique gold, black base coat
- AG-R** = antique gold, rust base coat
- AS-B** = antique silver, black base coat
- AS-R** = antique silver, rust base coat
- AW** = antique white
- AW-C** = antique white / crackled
- BL** = antique black
- BL-C** = antique black / crackled
- MG** = mahogany
- OL** = olive
- OL-C** = olive / crackled

MATERIALS:

■ resin, wood

DIAMETER & BRACKETS:

- ✦ 2"D: bracket required every 6-8 feet
- ✦ 2¼"D: bracket required every 6-8 feet
- * 3"D: bracket required every 8-10 feet

STYLE:

Traditional

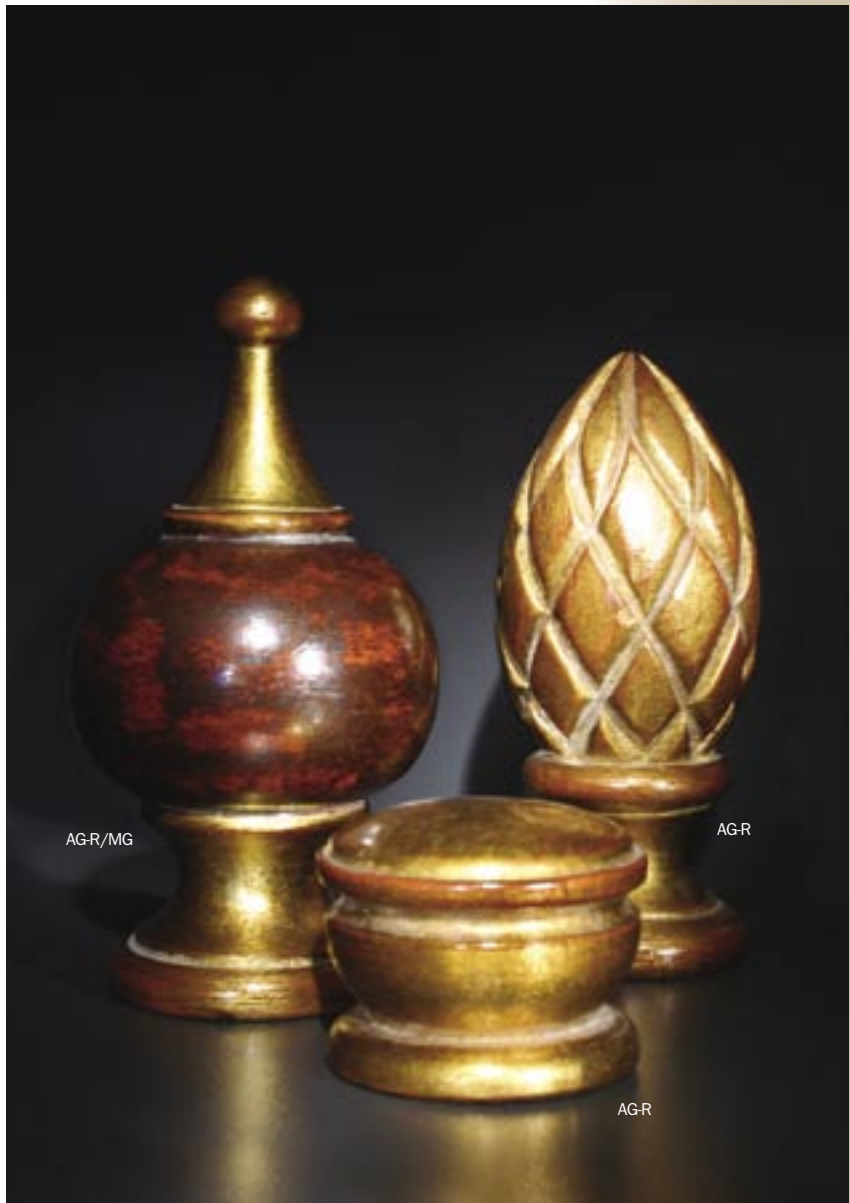
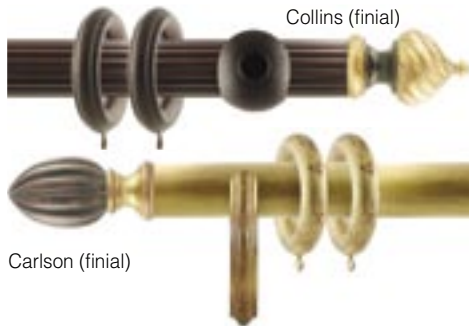
SHIPPING & ADDITIONAL NOTES:

Pole lengths exceeding 106" will incur significant additional freight charges. The collection's pole splice can be used to achieve longer spans - the required center bracket will help conceal the resulting seam.

ABBREVIATION KEY:

- D** = diameter
- H** = height
- L** = length
- P** = projection
- W** = width
- ID** = inside diameter
- OD** = outside diameter

SAMPLE SET-UPS:



Hunley

Vesta's Hunley collection showcases hand-sculpted and hand-finished traditional finial designs by one of the United States' most accomplished artisans. The beauty resides in the details of each masterpiece. Items are available in a rich palette of colors or finish combinations that command and portray the pinnacle of extravagant elegance.

COMPONENT SPOTLIGHT

Most finials in this collection are available in finish combinations. Please call Vesta if you would like to receive a faxed outline of a finial so that you can specify what finish you would like where. As an example of a combination, see finial at right.

part: #581123-AG-B/OL



drapery hardware made easy!

- Innovative
- Functional
- Unique

800.638.3782
sales@ivesta.com



Hunley collection

- ⊕ 2" diameter
- ◆ 2 1/4" diameter
- ✱ 3" diameter

Vesta Inc / 800.638.3782 - voice / 864.225.0228 - fax / www.ivesta.com

Availability: special order 3-4 weeks, no returns | Available Finishes: AG, AW, AS, BL, MG, OL | Materials: resin, wood

BRACKETS

SPECIAL ORDER
3-4 weeks, no returns



Sumter Short
 ⊕ #502013 - 2 7/8"W, 4"P
 ◆ #582013 - 3 1/4"W, 4 1/4"P
 ✱ #752013 - 3 3/4"W, 4 1/2"P
 *shown in AG-R



Sumter Long
 ⊕ #502016 - 2 7/8"W, 6 1/2"P
 ◆ #582016 - 3 1/4"W, 6 1/2"P
 *shown in MG



Morgan Short
 ⊕ #502003 - 7 1/4"H, 3"P
 ◆ #582003 - 7 1/4"H, 3"P
 ✱ #752003 - 7 1/4"H, 3"P
 *shown in AG-R



Morgan Long
 ⊕ #502006 - 6 1/4"H, 6"P
 ◆ #582006 - 6 1/4"H, 6"P
 ✱ #752006 - 6 1/4"H, 6"P
 *shown in MG



Inside Mount
 ⊕ #502000 - 2 3/8"W, 1 3/16"L
 ◆ #582000 - 3 1/8"W, 1"L
 ✱ #752000 - 4 3/8"W, 1 1/8"L
 *shown in MG

TIEBACKS



Payne
 #903110 - 4 1/2"W, 6"P
 *shown in AG-R, BL Combo



Hasker
 #903120 - 3 1/2"W, 6"P
 *shown in AG-R, BL Combo



McClintock
 #903128 - 3"W, 6"P
 *shown in AG-R



Williams
 #903129 - 2 1/2"W, 5"P
 *shown in AG-R



Sprague
 #903130 - 3"W, 6"P
 *shown in AG-R, BL Combo

ACCESSORIES



Plain Ring
 ⊕ #506100 - 2 1/4"ID, 3 3/4"OD
 ◆ #586100 - 2 3/4"ID, 4 1/4"OD
 ✱ #756100 - 3 1/2"ID, 5 1/4"OD
 *shown in AG-R



Cuffed Ring
 ⊕ #506120 - 2 1/4"ID, 3 3/4"OD
 ◆ #586120 - 2 3/4"ID, 4 1/4"OD
 ✱ #756120 - 3 1/2"ID, 5 1/4"OD
 *shown in MG



End Cap
 ⊕ #501100 - 2 1/2"W, 1"L
 ◆ #581100 - 2 7/8"W, 1 1/4"L
 ✱ #751100 - 3 1/4"W, 1 1/2"L
 *shown in MG



Wand
 #900200 - 39"L
 #900225 - 49"L
 #900250 - 59"L
 *shown in MG



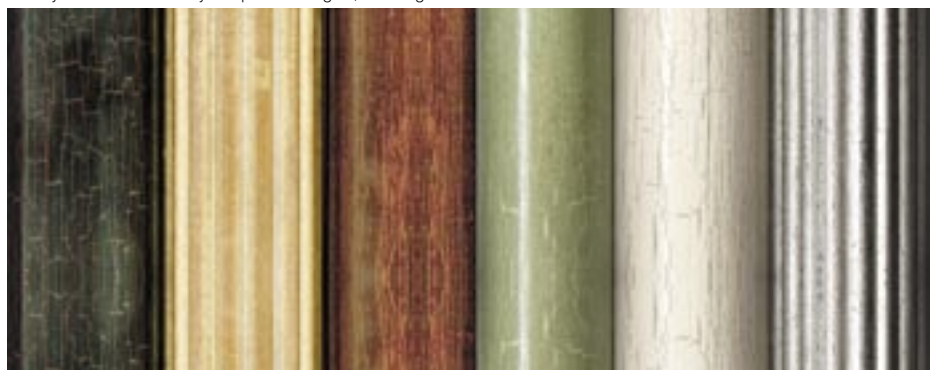
Park center ornament
 ◆ #589900
 4"W, 4 1/2"L
 *shown in AG-R



Hunley Color Swatches
 #993000

WOOD POLES

sold by the foot - will cut to your specified lengths, no charge



shown in BL-C | shown in AG-R | shown in MG | shown in OL-C | shown in AW-C | shown in AS-B



Pole Splice
 #909200 - 2"L

Plain

- ⊕ #508100 - 2"D
- ◆ #588100 - 2 1/4"D
- ✱ #758100 - 3"D

Reeded

- ⊕ #508120 - 2"D
- ◆ #588120 - 2 1/4"D
- ✱ #758120 - 3"D

- ⊕ color/shape indicates compatibility with 2" diameter poles
- ◆ color/shape indicates compatibility with 2 1/4" diameter poles
- ✱ color/shape indicates compatibility with 3" diameter poles

Combinations are available for most finials since items are custom made to order. Areas of solid color lacking intricate detail may have their finish cracked for an additional charge. Available finishes are: antique gold/black base coat (AG-B), antique gold / rust base coat (AG-R), antique silver / black base coat (AS-B), antique silver / rust base coat (AS-R), antique white (AW), antique white / cracked (AW-C), antique black (BL), antique black / cracked (BL-C), mahogany (MG), olive (OL), olive / cracked (OL-C)

Dimensions shown beneath the hardware describe the physical characteristics of that item - IT DOES NOT REFER TO THE POLE DIAMETER IT'S COMPATIBLE WITH.

Hunley collection

2" diameter
bracket required every 6' - 8'

2 1/4" diameter
bracket required every 6' - 8'

Vesta Inc / 800.638.3782 - voice / 864.225.0228 - fax / www.ivesta.com

Availability: special order 3-4 weeks, no returns | Available Finishes: AG, AW, AS, BL, MG, OL | Materials: resin, wood



SPECIAL ORDER
3.4 weeks, no returns

FINIALS

for 2"D & 2 1/4"D poles

A. Carlson

◆◆ #581103 - 3"W, 6 1/4"L
*shown in AG-R, MG Combo

B. Becker

◆◆ #581104 - 3 1/4"W, 6 1/2"L
*shown in AG-R, MG Combo

C. Simkins

◆◆ #581105 - 3 1/2"W, 6"L
*shown in AG-R

D. Ridgeway

◆◆ #581107 - 2 3/4"W, 5"L
*shown in AG-R

E. Wicks

◆◆ #581108 - 2 3/4"W, 5 1/2"L
*shown in AG-R, MG Combo

F. White

◆◆ #581109 - 3"W, 5"L
*shown in AG-R

G. Collins

◆◆ #581110 - 3"W, 4 3/4"L
*shown in AG-R, BL Combo

H. Hunley

◆◆ #581101 - 3 3/4"W, 6 1/8"L
*shown in AG-R, BL Combo

I. Robinson

◆◆ #581131 - 4 1/2"W, 7 1/2"L
*shown in AG-R, OL Combo

J. Marshall

◆◆ #581135 - 3 1/2"W, 3 1/2"L
*shown in AG-R, MG Combo

K. Miller

◆◆ #581112 - 3"W, 2"L
*shown in AG-R

L. Kelly

◆◆ #581125 - 3 1/2"W, 5"L
*shown in AG-R, AW-C Combo

M. Singer

◆◆ #581122 - 4"W, 6 1/2"L
*shown in AG-R, MG Combo

N. McClintock

◆◆ #581124 - 3 1/2"W, 5"L
*shown in AG-B

O. Davis

◆◆ #581126 - 3"W, 4 3/4"L
*shown in AG-R

P. Doyle

◆◆ #581123 - 3 1/2"W, 6 3/4"L
*shown in AS-B, BL Combo

Q. Kane

◆◆ #581127 - 6"W, 6"L
*shown in AG-R

R. McHugh

◆◆ #581133 - 4"W, 6 1/2"L
*shown in AG-R, MG Combo

S. Beard

◆◆ #581134 - 5"W, 5"L
*shown in AG-R

T. Beauregard

◆◆ #501113 - 2 5/8"W, 2"L
*shown in AG-R

U. Alexander

◆◆ #501106 - 2 5/8"W, 5 3/4"L
*shown in AG-R



- ◆ color/shape indicates compatibility with 2" diameter poles
- ◆◆ color/shape indicates compatibility with 2 1/4" diameter poles
- * color/shape indicates compatibility with 3" diameter poles

Combinations are available for most finials since items are custom made to order. Areas of solid color lacking intricate detail may have their finish crackled for an additional charge. Available finishes are: antique gold/black base coat (AG-B), antique gold / rust base coat (AG-R), antique silver / black base coat (AS-B), antique silver / rust base coat (AS-R), antique white (AW), antique white / crackled (AW-C), antique black (BL), antique black / crackled (BL-C), mahogany (MG), olive (OL), olive / crackled (OL-C)

Hunley collection

3" diameter bracket required every 8' - 10'

Vesta Inc / 800.638.3782 - voice / 864.225.0228 - fax / www.ivesta.com

Availability: special order 3-4 weeks, no returns | Available Finishes: AG, AW, AS, BL, MG, OL | Materials: resin, wood

SPECIAL ORDER
3-4 weeks, no returns



FINIALS for 3"D poles



Hunley
* #751101 - 4 1/2"W, 6 1/2"L
*shown in AG-R, BL Combo



Dixon
* #751102 - 4"W, 6 1/2"L
*shown in AG-R, MG Combo



Carlson
* #751103 - 4 1/8"W, 6 1/2"L
*shown in AG-R, MG Combo



Bennett
* #751111 - 3 3/8"W, 3 1/4"L
*shown in AG-R, MG Combo



Watson
* #751121 - 4"W, 6 3/4"L
*shown in AG-R, BL Combo



Robinson
* #751131 - 4 1/2"W, 7 1/2"L
*shown in AG-R, OL Combo



Patterson
* #751132 - 4 1/2"W, 7"L
*shown in AG-R, BL Combo



Marshall
* #751135 - 4 1/2"W, 4 1/2"L
*shown in AG-R, MG Combo

- ◆ color/shape indicates compatibility with 2" diameter poles
- ◆ color/shape indicates compatibility with 2 1/4" diameter poles
- * color/shape indicates compatibility with 3" diameter poles

Combinations are available for most finials since items are custom made to order. Areas of solid color lacking intricate detail may have their finish crackled for an additional charge. Available finishes are: antique gold/black base coat (AG-B), antique gold / rust base coat (AG-R), antique silver / black base coat (AS-B), antique silver / rust base coat (AS-R), antique white (AW), antique white / crackled (AW-C), antique black (BL), antique black / crackled (BL-C), mahogany (MG), olive (OL), olive / crackled (OL-C)

Dimensions shown beneath the hardware describe the physical characteristics of that item - IT DOES NOT REFER TO THE POLE DIAMETER IT'S COMPATIBLE WITH.