

Vesta drapery hardware

INSTRUCTIONS

Rail/Tube Connector

item numbers: #169229, #209705, 209229, #289229, #289705

PART OF COLLECTIONS:

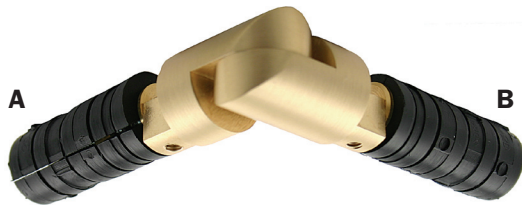
GeoLux (pgs. 22-25)

Italian Baroque (pgs. 36-39)

Modern Classics (pgs. 48-49)

Techno Track (pgs. 62-63)

Touch of Virtue (pgs. 68-69)



To use the Rail/Tube Connector with tubing...

This is how the Rail/Tube Connector will arrive - ready for use as a tubing connector.

1. Remove set screws C & D
2. Simply push the the black plastic expanders A & B into the tubing.
3. Turning tubing clockwise will cause the plastic expanders to tighten within the tube and create a snug fit.



To use the Rail/Tube Connector with aluminum extruded track...

1. Remove the black plastic expanders A & B by turning counter-clockwise. Do likewise with the machined threaded piece that holds the plastic anchors in place.
2. Loosen set screws C & D
3. Insert connector into the bottom rail of the track turned as shown in the photograph at left and tighten the set screws to lock firmly into track.

